



# 2 Sudoku Xtra

Welcome to **Sudoku Xtra** issue 1!

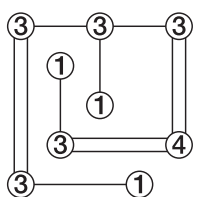
Each issue will feature a wide range of logic and number puzzles, from Sudoku and variants through to esoteric Japanese types or even entirely original variations.

This first issue is partially based on the content I created for the sadly defunct Sudoku Pro magazine's unpublished issue 51, so now is a great chance to influence future issues.

In other words, this is **your** magazine, produced on a monthly basis and containing the content **you** want to see. So let me know your preferences at [Gareth@SudokuXtra.com](mailto:Gareth@SudokuXtra.com), or go along to the website at [www.SudokuXtra.com](http://www.SudokuXtra.com) and have your say.

Every puzzle has one, unique solution that can be reached by logic.

**Dr Gareth Moore**



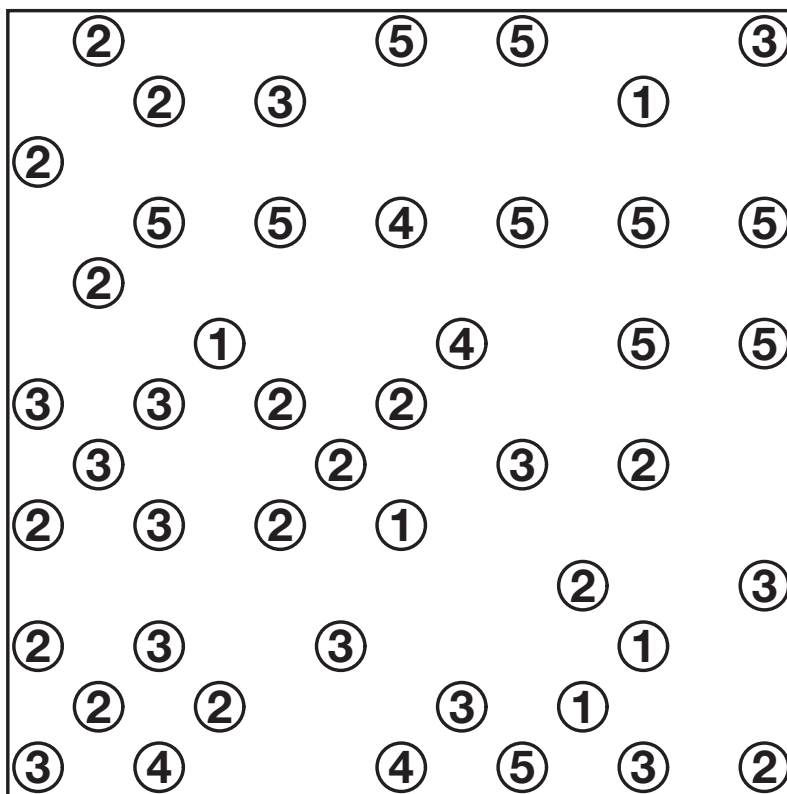
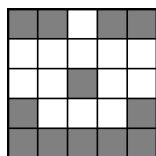
## >> Hashi

**Join circled numbers with horizontal or vertical lines**, such that each number has as many lines connected to it as specified by its value. No lines may cross, and no more than two lines may join any pair of numbers. The finished layout must allow you to travel from any number to any other number just by following one or more lines.

## >> Cover Puzzle

### >> Hanjie

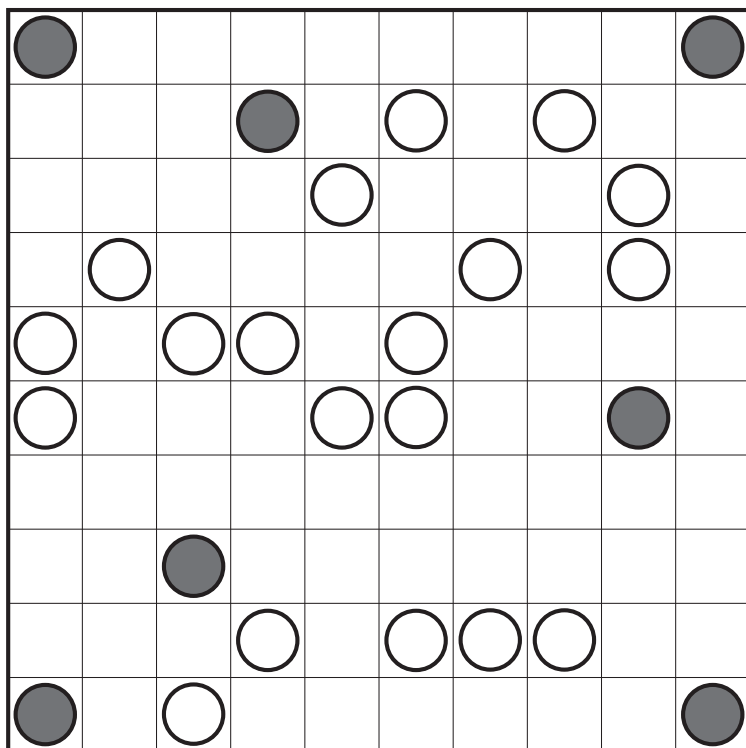
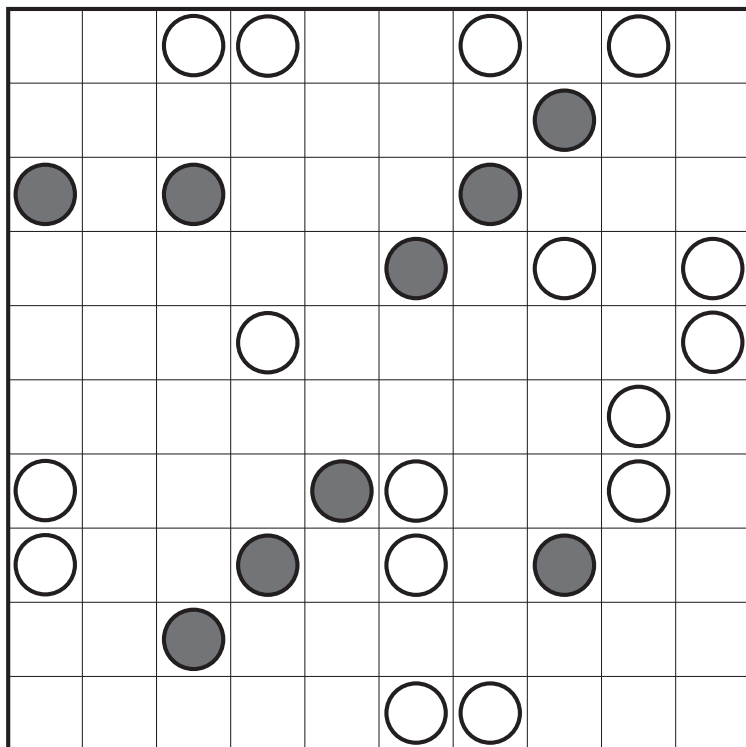
**Shade in squares in the grid to reveal a picture** whilst obeying the clue constraints at the end of each line. The clues provide, in order from the left or the top, a list of the length of every run of consecutive shaded squares in each row or column. Each run is separated by at least one empty square. For example "2,3" would mean there is a run of 2 shaded squares, followed by at least one empty square, and then 3 or more consecutive shaded squares.



Sudoku Xtra issue 1, November 2009. Published by and Copyright © 2009 Dr Gareth Moore.

See [www.SudokuXtra.com](http://www.SudokuXtra.com) for printed or download copies of other issues, or email [Gareth@SudokuXtra.com](mailto:Gareth@SudokuXtra.com).

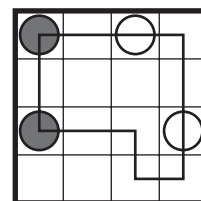
No unauthorised reproduction in any form permitted. You may print or reproduce copies for your personal use only.



## >> Masyu

Draw a single loop that passes through the centre of every circle.

- > On a shaded circle you must turn 90 degrees and continue straight for at least one square each side.
- > On a white circle you must continue straight but then you must turn 90 degrees on one or both of the adjacent squares.
- > You cannot pass through a square more than once.



# 4 Sudoku Xtra

## >> Calcudoku

Place the numbers 1 to 6 (or 1 to the size of the grid) into each row and column of the grid.

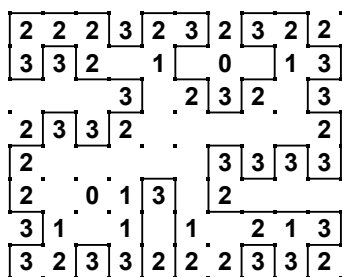
> The value at the top-left of each bold-lined region must be obtained when all of the numbers in that region have the given operation (+, -, ×, ÷) applied. For - and ÷ operations start with the largest number in the region and then subtract or divide by the other numbers.

> Remember that you **can** repeat a number within a bold-lined region, unlike in Killer Sudoku.

<sup>2</sup> 2	<sup>14+</sup> 1	<sup>4+</sup> 3	<sup>9+</sup> 4	5	<sup>10+</sup> 6
<sup>10+</sup> 6	5	1	<sup>8+</sup> 2	<sup>3</sup> 3	4
4	3	5	6	<sup>3+</sup> 1	2
<sup>3+</sup> 1	2	<sup>6+</sup> 4	<sup>15+</sup> 3	6	<sup>8+</sup> 5
<sup>8+</sup> 5	<sup>6</sup> 6	2	<sup>6+</sup> 1	4	3
3	<sup>10+</sup> 4	6	5	2	<sup>1</sup> 1

2÷		8×			15+
6	2×	2-	2		
120×			10+		
	30×		7+	5×	
		2			6
	0-			9+	

31+			90×				4
		90×			11+		160×
	2-	4	7+		3		
14+		6×	896×		5÷	18+	
							10+
	30×	2	20×		7		
		192×	13+			3	12+
7				8÷			

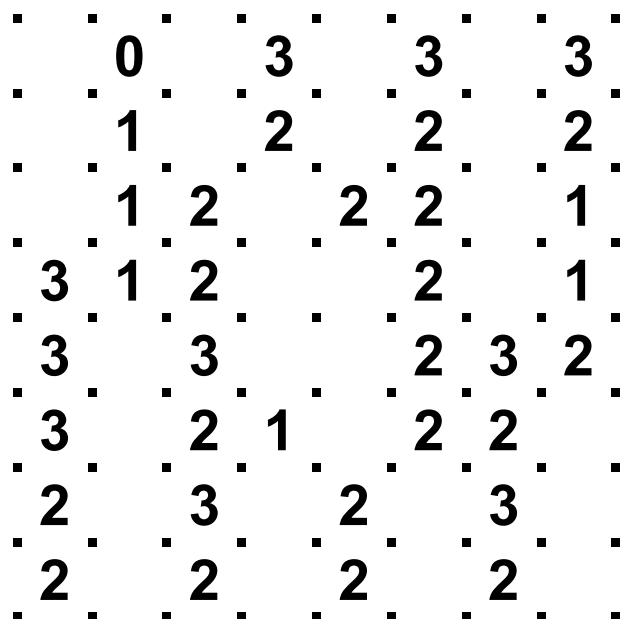
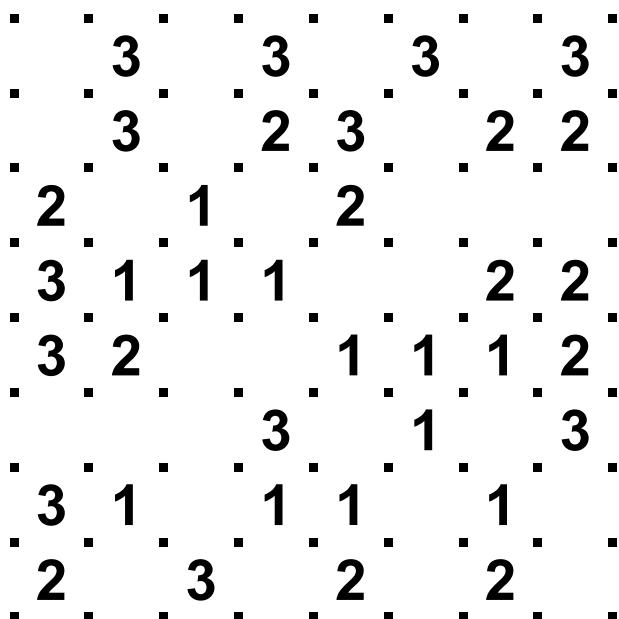
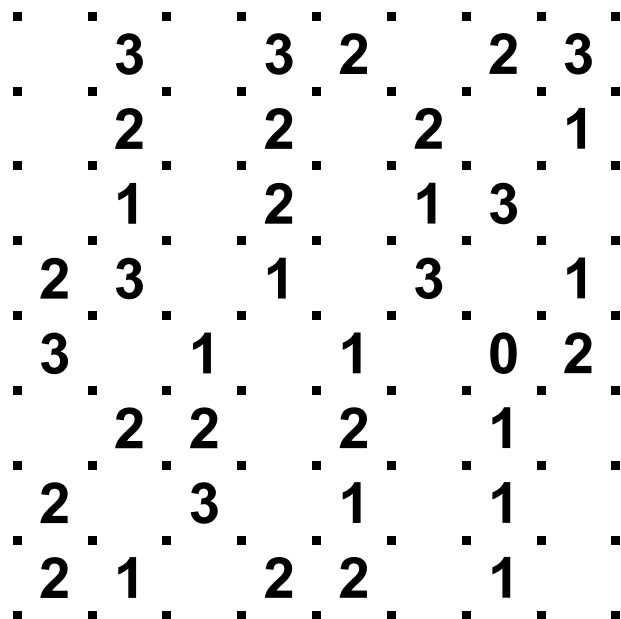
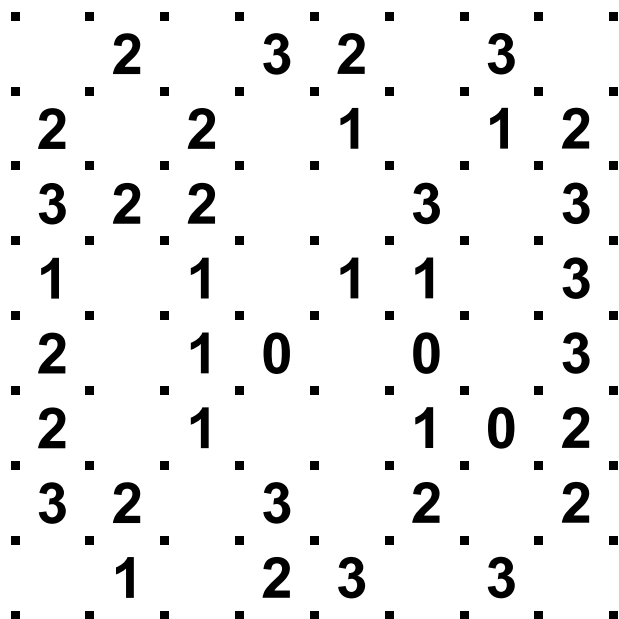


## >> Slitherlink

Draw a single loop by connecting together the dots so that each numbered square has the specified number of adjacent line segments.

> Dots can only be joined by straight horizontal or vertical lines.

> The loop cannot cross or overlap itself in any way.



# 6 Sudoku Xtra

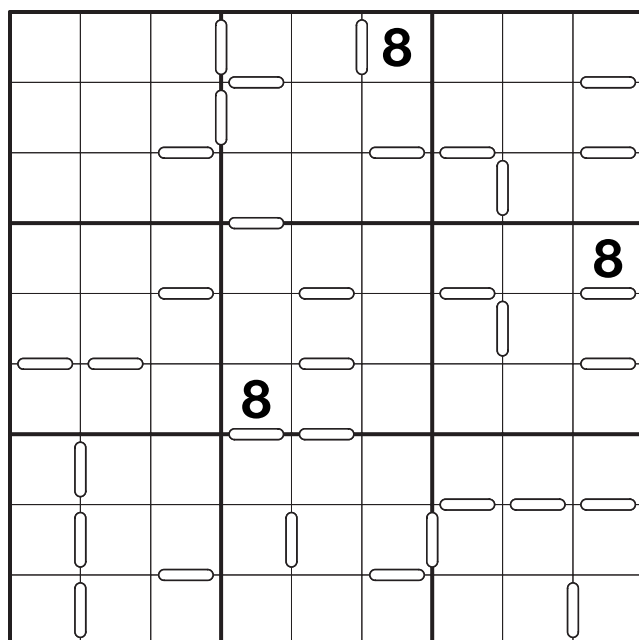
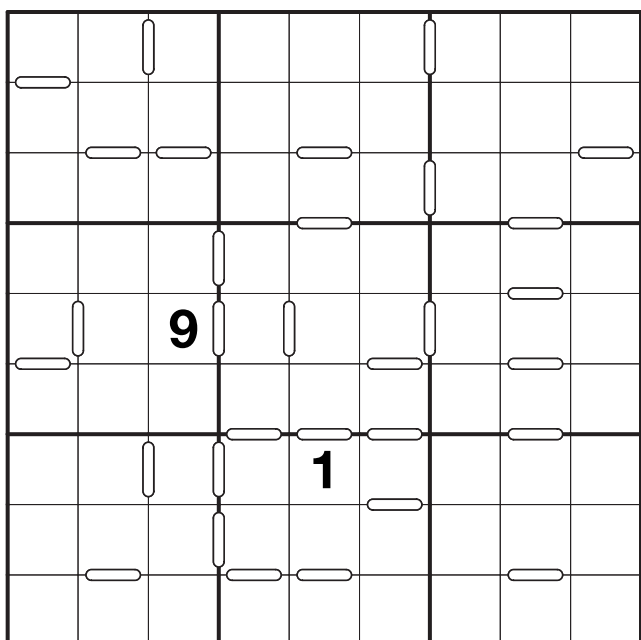
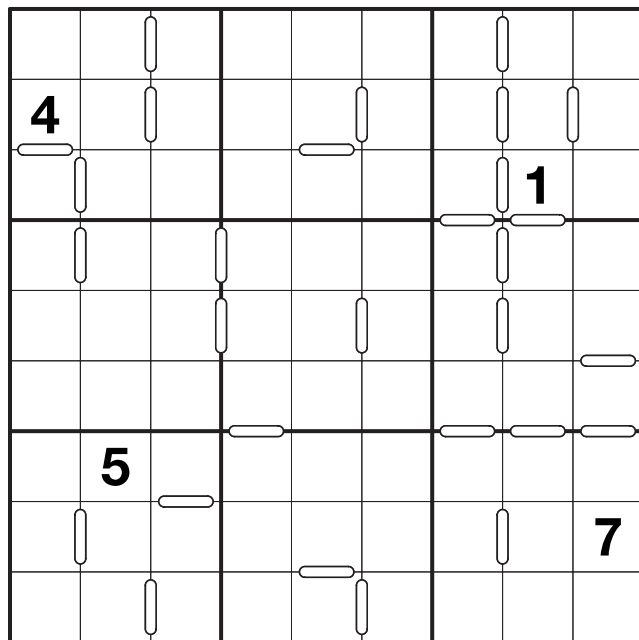
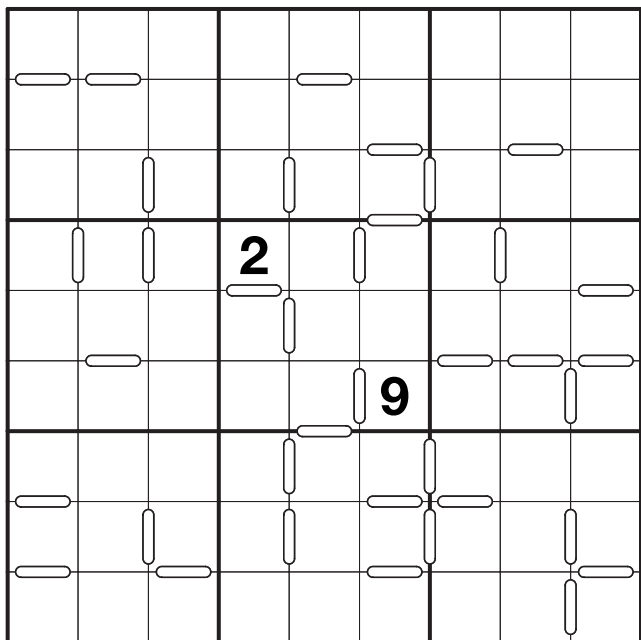
5	3	4	6	2	1	9	8	7
8	7	9	5	3	4	2	1	6
6	2	1	9	7	8	4	5	3
7	1	6	8	4	9	3	2	5
2	4	5	3	1	7	8	6	9
9	8	3	2	6	5	1	7	4
3	9	8	1	5	6	7	4	2
1	6	7	4	9	2	5	3	8
4	5	2	7	8	3	6	9	1

## >> Consecutive Sudoku

Place 1 to 9 into every row, column and marked 3x3 box, whilst obeying the white 'consecutive' markers between certain squares.

>Consecutive markers indicate **all** touching squares with consecutive numbers, such as 1&2, 2&3 or 7&8.

>Don't forget that squares **without** a white marker between are **not** consecutive.



## >> Hitori

Shade in squares so that no number occurs more than once per row or column.

> Shaded squares cannot touch in either a horizontal or vertical direction.

> All unshaded squares must form a single continuous area.

1	4	7	8	7	3	7	2
6	3	7	5	2	5	3	1
4	5	8	3	7	2	4	6
8	3	2	7	6	1	5	1
4	1	8	2	8	6	8	3
3	6	5	7	1	1	2	8
2	6	1	3	3	8	4	5
4	2	4	1	4	7	4	8

2	7	8	8	6	8	3	3
5	1	6	1	2	3	4	2
7	6	2	8	5	4	8	3
3	2	4	5	4	7	6	8
8	5	5	8	7	4	2	3
3	8	3	4	2	5	7	1
4	5	3	7	8	2	1	3
1	3	1	2	1	6	7	4

5	9	4	2	10	8	6	5	3	7
3	5	9	7	5	7	10	7	8	10
9	7	6	10	5	3	4	5	2	8
4	1	8	8	6	2	5	10	9	10
9	6	7	5	8	10	3	4	1	6
1	10	2	3	2	5	8	8	7	4
9	6	2	5	7	9	4	9	10	10
2	4	1	4	9	4	8	6	7	5
7	5	2	6	7	10	1	10	4	3
6	1	5	1	4	7	8	3	2	10

# 8 Sudoku Xtra

6	9	2	8	5	7	4	1	3
5	7	3	1	4	9	2	6	8
1	8	4	6	2	3	7	9	5
9	5	2	7	3	8	4	1	6
9	5	2	7	3	8	4	1	6
6	1	3	2	4	5	7	9	8
6	1	3	2	4	5	7	9	8
7	4	8	9	1	6	2	3	5
7	4	8	9	1	6	2	3	5
3	8	9	4	6	1	5	7	2
3	8	9	4	6	1	5	7	2
4	7	5	8	2	9	3	6	1
4	7	5	8	2	9	3	6	1
2	6	1	3	5	7	9	8	4
2	6	1	3	5	7	9	8	4
8	2	6	5	9	3	1	4	7
8	2	6	5	9	3	1	4	7
5	9	7	1	8	4	6	2	3
5	9	7	1	8	4	6	2	3
1	3	4	6	7	2	8	5	9
1	3	4	6	7	2	8	5	9
9	4	6	2	1	5	8	3	7
9	4	6	2	1	5	8	3	7
2	3	5	7	9	8	6	4	1
2	3	5	7	9	8	6	4	1
7	1	8	4	3	6	9	5	2
7	1	8	4	3	6	9	5	2

## >> Samurai Star

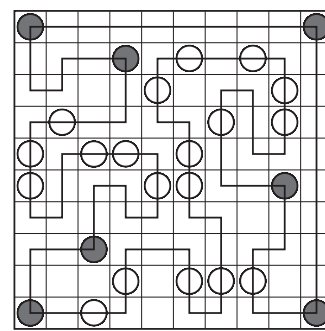
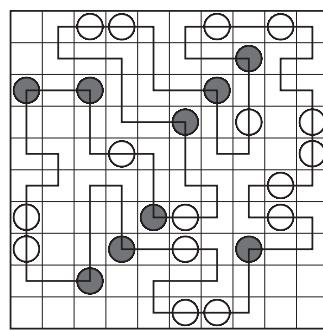
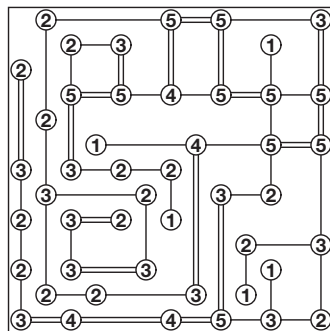
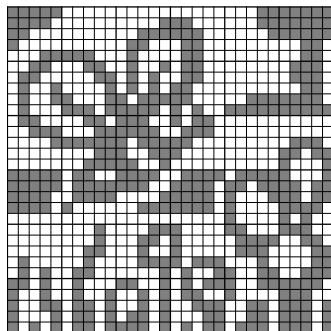
Place 1 to 9 into each row, column and marked 3x3 box of each of the five underlying 9x9 grids.

> Don't forget the 'hidden' fifth 9x9 Sudoku grid in the centre of the puzzle.

				9				
7			6		3			9
		4	7		8	6		
6								9
		5					9	
		1		8		3		4
	9	3						1
2								2
	1	4						8
		2		5		2		3
			1				3	
	8							3
		7	4		1	8		
1			3		6			4
				7				

# 38 Sudoku Xtra

## >> Solutions for pages 1 to 7



Bee in Garden

2+	3	6	4 <sup>8x</sup>	1	2	5 <sup>15+</sup>
6	6	1	5 <sup>2x</sup>	2 <sup>2-</sup>	3	4
120x	5	2	3	6 <sup>10+</sup>	4	1
	4	5 <sup>30x</sup>	6	3 <sup>7+</sup>	1 <sup>5x</sup>	2
	1	3 <sup>2</sup>	2	4	5 <sup>6</sup>	6
	2	4 <sup>0-</sup>	1	5 <sup>9+</sup>	6	3

31+	2	8	7	3	5	6	1	4
	8	1	5 <sup>90x</sup>	6	3	4	7	2 <sup>160x</sup>
	5	7 <sup>2-</sup>	4 <sup>4</sup>	1 <sup>7+</sup>	6	3	2	8
14+	3	2	6	7	8	1	4	5
	4	3	1	8	2	5	6	7 <sup>10+</sup>
	1	6 <sup>30x</sup>	2 <sup>2</sup>	5 <sup>20x</sup>	4	7	8	3
	6	5	8 <sup>192x</sup>	4 <sup>13+</sup>	7	2	3 <sup>3</sup>	1 <sup>12+</sup>
7	7	4	3	2	1	8	5	6

2	3	2	3	
2	2	1	1	2
3	2	2	3	3
1	1	1	1	3
2	1	0	0	3
2	1	1	0	2
3	2	3	2	2
1	2	3	3	

3	3	2	2	3
2	2	2	2	1
1	2	1	3	1
2	3	1	3	1
3	1	1	0	2
2	2	2	1	1
2	3	1	1	1
2	1	2	2	1

3	3	3	3	
3	2	3	2	2
2	1	2	2	2
3	1	1	2	2
3	2	1	1	2
3	1	1	3	2
2	3	2	2	2

0	3	3	3	
1	2	2	2	1
1	2	2	2	1
3	1	2	2	1
3	3	2	3	2
3	2	1	2	2
2	3	2	3	2
2	2	2	2	2

5	3	6	9	2	8	1	7	4
4	2	9	7	1	5	8	3	6
1	8	7	4	3	6	5	2	9
3	4	5	2	6	7	9	8	1
9	6	8	3	4	1	7	5	2
2	7	1	5	8	9	6	4	3
6	9	4	8	7	2	3	1	5
7	1	2	6	5	3	4	9	8
8	5	3	1	9	4	2	6	7

7	2	1	5	9	6	3	4	8
4	8	9	1	3	2	7	6	5
5	6	3	7	4	8	2	1	9
3	4	8	9	7	5	1	2	6
1	7	5	6	2	3	8	9	4
6	9	2	4	8	1	5	7	3
9	5	7	3	1	4	6	8	2
2	1	6	8	5	9	4	3	7
8	3	4	2	6	7	9	5	1

9	4	5	2	6	8	7	1	3
8	2	7	5	3	1	4	9	6
1	3	6	9	4	7	8	2	5
4	8	2	1	5	9	6	3	7
6	5	9	8	7	3	2	4	1
7	1	3	6	2	4	9	5	8
2	9	8	7	1	5	3	6	4
5	7	4	3	9	6	1	8	2
3	6	1	4	8	2	5	7	9

2	9	4	5	7	8	1	6	3
8	5	7	6	1	3	9	2	4
1	3	6	2	9	4	8	7	5
4	7	9	3	6	2	5	1	8
6	2	8	1	5	9	4	3	7
5	1	3	8	4	7	2	9	6
9	8	5	7	3	1	6	4	2
3	4	2	9	8	6	7	5	1
7	6	1	4	2	5	3	8	9

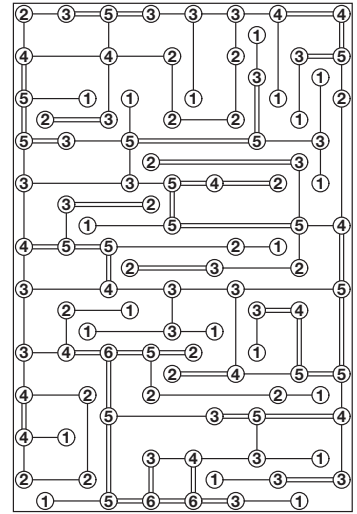
1	4	7	8	7	3	7	2
6	3	7	5	2	5	3	1
4	5	8	3	7	2	4	6
8	3	2	7	6	1	5	1
4	1	8	2	8	6	8	3
3	6	5	7	1	1	2	8
2	6	1	3	3	8	4	5
4	2	4	1	4	7	4	8

5	9	4	2	10	8	6	5	3	7
3	5	9	7	5	7	10	7	8	10
9	7	6	10	5	3	4	5	2	8
4	1	8	8	6	2	5	10	9	10
9	6	7	5	8	10	3	4	1	6
1	10	2	3	2	5	8	8	7	4
9	6	2	5	7	9	4	9	10	10
2	4	1	4	9	4	8	6	7	5
7	5	2	6	7	10	1	10	4	3
6	1	5	1	4	7	8	3	2	10

## >> Solutions for pages 8 to 12

			3	8	6	5	9	2	1	4	7	
			7	1	5	6	4	3	2	8	9	
			2	9	4	7	1	8	6	3	5	
5	6	8	9	3	7	4	2	1	8	5	6	7
4	7	9	1	5	2	3	8	6	7	9	4	5
3	2	1	6	4	8	9	7	5	3	2	1	4
6	9	3	4	2	1	8	5	7	9	6	3	1
2	5	7	8	6	9	1	3	4	5	7	2	9
8	1	4	5	7	3	2	6	9	4	1	8	3
9	4	2	7	8	5	6	1	3	2	4	9	8
7	3	6	2	1	4	5	9	8	6	3	7	2
1	8	5	3	9	6	7	4	2	1	8	5	6
			9	3	7	4	2	1	8	5	6	
			1	5	2	3	8	6	7	9	4	
			6	4	8	9	7	5	3	2	1	

			9	8	2	3	1	6	7	4	5	
			4	5	3	2	8	7	1	9	6	
			7	1	6	5	4	9	3	8	2	
1	2	4	3	6	9	7	5	8	4	2	1	3
6	3	7	5	2	8	4	9	1	6	3	7	2
9	8	5	1	4	7	6	3	2	9	5	8	4
5	4	6	8	7	1	9	2	3	5	6	4	1
3	7	8	2	9	5	1	6	4	8	7	3	9
2	9	1	6	3	4	8	7	5	2	1	9	6
7	5	9	4	8	3	2	1	6	7	9	5	8
4	1	2	9	5	6	3	8	7	1	4	2	5
8	6	3	7	1	2	5	4	9	3	8	6	7
			5	4	8	7	9	2	6	3	1	
			1	2	9	6	3	8	4	5	7	
			3	6	7	4	5	1	9	2	8	



## >> Subscribe Now!

Issue 2 of **Sudoku Xtra** is out in December 2009, so make sure you visit [www.SudokuXtra.com](http://www.SudokuXtra.com) to sign up for notification of future issues, or subscribe now and beat any future price rise! (Only download copies, not printed copies, are currently available via subscription)

									7	6
	8							8		
	7	5						6	4	
							3		5	
	4									
3										9
		1					11		9	2
2							12			10
		11								12
1	10									

											3
											2
											7
											8

											7	6


8	5	6	7	9	2	4	1	3				
1	2	7	8	3	4	5	6	9				
3	4	9	6	1	5	8	2	7				
7	8	4	1	6	3	9	5	2				
6	1	5	2	4	9	3	7	8				
9	3	2	5	8	7	6	4	1				
5	9	1	4	7	8	2	3	6				
4	7	8	3	2	6	1	9	5				
2	6	3	9	5	1	7	8	4				

4	1	7	9	5	6	2	3	8				
5	8	9	6	1	3	4	2	7				
8	6	1	2	3	5	7	4	9				
2	7	3	8	6	4	9	5	1				
3	9	5	1	4	2	8	7	6				
7	5	6	4	9	8	3	1	2				
9	4	2	3	7	1	6	8	5				
1	2	4	7	8	9	5	6	3				
6	3	8	5	2	7	1	9	4				

7	2	4	5	1	9	3	6	8				
8	6	1	9	5	2	7	3	4				
9	5	6	8	3	1	4	2	7				
4	7	3	2	8	5	9	1	6				
3	1	7	6	9	8	2	4	5				
2	4	9	7	6	3	8	5	1				
5	9	8	3	4	6	1	7	2				
1	8	5	4	2	7	6	9	3				
6	3	2	1	7	4	5	8	9				

7	4	1	5	2	9	3	6	8				
8	3	4	9	6	1	2	5	7				
5	9	6	2	8	4	7	1	3				
1	2	3	4	7	5	6	8	9				
3	8	7	6	1	2	5	9	4				
2	1	8	7	5	3	9	4	6				
4	5	2	3	9	6	8	7	1				
6	7	9	1	3	8	4	2	5				
9	6	5	8	4	7	1	3	2				